

How to Register a Diecast Collectible

Diecast must be registered one at a time. The following instructions explain how to register a diecast in your collection:

1. The first thing that you will want to do is to photograph your diecast. DCR allows you to upload three pictures of your diecast. See the SOP “How to Photograph Your Diecast” for helpful instructions to photograph your diecast.
2. Go to www.diecastregistry.com
3. Enter your User ID and PW in the upper right hand corner.
4. Click on the blue circular arrow (see picture below).



5. Once you are successfully signed in, you will see your User ID in the upper right hand corner, and you will have access to the members-only pages: Register My Diecast, My Collection, The Registry, and Price Guide. If you can sign in, but do not have access to the members-only pages, then your membership has expired and needs to be renewed. See the SOP “How to Renew My DCR Membership” for helpful instructions to renew your membership



6. Click on Register My Diecast in the main menu.



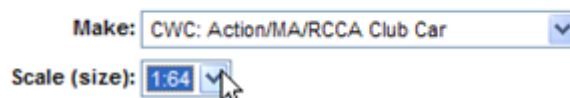
7. In step #1, select the make of the diecast you are registering.

1 Select, in order, Make / Scale / Year / Driver / Paint Scheme



8. Then select the scale of the diecast you are registering.

1 Select, in order, Make / Scale / Year / Driver / Paint Scheme



9. Then select the year of the diecast you are registering. The year is the year in which the diecast was released by the manufacturer. For example the year of the Dale Sr. 1:24 #30 Army 1976 Chevy Malibu Elite is “1999” because this car was released in 1999.

1 Select, in order, Make / Scale / Year / Driver / Paint Scheme

Make: CWC: Action/MA/RCCA Club Car
 Scale (size): 1:64
 Year: 2000

10. Then select the driver of the diecast you are registering.

1 Select, in order, Make / Scale / Year / Driver / Paint Scheme

Make: CWC: Action/MA/RCCA Club Car
 Scale (size): 1:64
 Year: 2000
 Driver: Earnhardt, Dale Jr.

11. Then select the paint scheme of the diecast you are registering.

1 Select, in order, Make / Scale / Year / Driver / Paint Scheme

Make: CWC: Action/MA/RCCA Club Car
 Scale (size): 1:64
 Year: 2000
 Driver: Earnhardt, Dale Jr.
 Paint Scheme: #8 Bud 2000 Chevy Monte Carlo - Richmond No Bull - Total View (2520)

If you cannot find your die cast in the DCR database, please complete the [Add Die Cast Form](#) and we will add it for you.
 Production quantities are shown in parentheses at the end of the paint scheme.
 A production quantity of "0" means that the item was never approved for production. However, prototypes may exist.
 A production quantity of "9999" means that there is conflicting data on the actual quantity produced by the manufacturer.



12. As you make each selection in the steps above, the page will refresh and show you a picture of the diecast. Check to see if the picture shown to the right matches your car.

1 Select, in order, Make / Scale / Year / Driver / Paint Scheme

Make: CWC: Action/MA/RCCA Club Car
 Scale (size): 1:64
 Year: 2000
 Driver: Earnhardt, Dale Jr.
 Paint Scheme: #8 Bud 2000 Chevy Monte Carlo - Richmond No Bull - Total View (2520)

If you cannot find your die cast in the DCR database, please complete the [Add Die Cast Form](#) and we will add it for you.
 Production quantities are shown in parentheses at the end of the paint scheme.
 A production quantity of "0" means that the item was never approved for production. However, prototypes may exist.
 A production quantity of "9999" means that there is conflicting data on the actual quantity produced by the manufacturer.



If the driver of your car, or the paint scheme you are looking for are not listed, or the picture does not match then:

- Double check to make sure you chose the correct make. Some helpful definitions:

CWC = Clear Window Car
 BWC = Black Window Car
 BWB = Black Window Bank
 CWB = Clear Window Bank

- Check to make sure you chose the correct year (this is the most frequent mistake). Choose a different year, and see if your driver and paint scheme are listed, and see if the photograph matches that of your diecast.
- While we have well over 100,000 diecast in our database, it is possible that we do not yet have your diecast entered (each diecast produced must be in our database before you can register one). If you cannot find your die cast in the DCR database, please complete the [Add Die Cast Form](#) and we will add it for you. Completing this car also puts the specific diecast in queue to have its market value added to our price guide.
- Production quantities are shown in parentheses at the end of the paint scheme. A production quantity of "0" means that the diecast was never approved for production, but prototypes exist. A production quantity of "9999" means that the manufacturer recorded the quantity produced as "Limited Edition," or that we have not yet been able to positively confirm how many were made. If you see 9999, and the box/packaging for your diecast states a production quantity, please [Contact Us](#) to advise us of the actual quantity made.

13. In step #2, enter the sequential number of the diecast you are registering. If your diecast is not sequentially numbered (NSN), then "NSN" will appear in the Sequential Number box, and you can skip this step.
- What is the "sequential number?" For diecast that are sequentially numbered (such as RCCA Elites), the sequential number identifies the order in which each car was manufactured. For example, RCCA made 2520 of the car in the example pictured herein. 919 means that this was the 919th/2520 cars made.
 - Where can I find the sequential number? This number can be found in the back window, on the underside of the chassis, or sometimes the number is listed only on the box or on a certificate that came in the box.

2 Record the Sequential Number and Condition of This Diecast

Sequential Number: Prototype If "NSN" appears in the "Sequential Number" box, the diecast you selected above is not sequentially numbered by the manufacturer.
 Condition: [Condition Description](#)

14. In step #2, choose the condition of the diecast you are registering. Click on the Condition Description hyperlink to see a definition of the available conditions.

2 Record the Sequential Number and Condition of This Diecast

Sequential Number: Prototype If "NSN" appears in the "Sequential Number" box, the diecast you selected above is not sequentially numbered by the manufacturer.
 Condition: [Condition Description](#)

15. In step #3, enter the date that you purchased the diecast you are registering. If you do not remember, or no longer have the paperwork, it is OK to enter, for example, "1/6/2001" to represent a diecast purchased sometime during the summer of 2001.
16. In step #3, enter the price that you paid for the diecast you are registering. If you do not remember, or no longer have the paperwork, it is OK to enter your best guess at what you paid for the item. As the owner of this diecast, you are the only person who will see this information.
- Does DCR use the purchase price entered here in its price guide? No, the price guide uses only data from actual sales prices from public, online auctions.

3 Document How You Acquired This Diecast

Date you purchased this item: (mm/dd/yyyy)
 Approximate purchase price: (xxxx.xx US Dollars)
This is the amount t

17. Documenting the ownership history of rare, or low-sequentially numbered, diecast is very important in establishing its authenticity. If you purchased your diecast from a DCR member, select 'No' in the drop down, then skip this step and proceed to step #19 below.

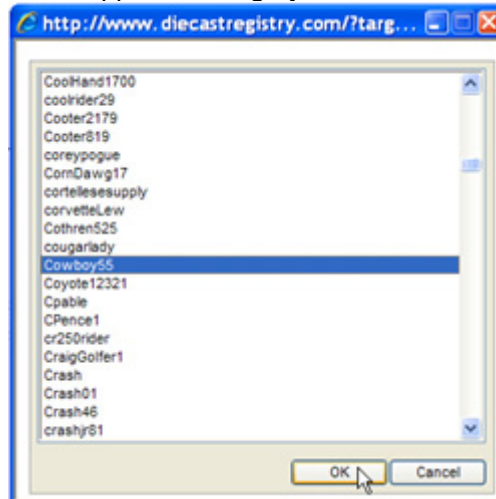
3 Document How You Acquired This Diecast

Date you purchased this item: (mm/dd/yyyy)
Approximate purchase price: (xxxx.xx US Dollars)
This is the amount t

Did you acquire this diecast from a Diecast Registry® member?

Diecast Registry® User ID:

18. If you purchased your diecast from a DCR member, then click on the [click here if the previous owner is a Diecast Registry member](#) hyperlink. A popup list will appear where you can select the User ID of the previous owner, then click on the OK button. The previous owner's User ID will appear in the gray text box.



19. If you purchased your diecast from someone who is not a DCR member, and you selected No in the drop down, then the page will refresh and provide a text box to enter the name of the previous owner. Enter the name of the previous owner.
- If you purchased your diecast directly from RCCA, then enter "RCCA" as the previous owner's name.
 - If you purchased your diecast from a retailer or hobby shop and cannot remember the name, enter "hobby shop," "trackside retailer," or other description as applicable.
 - Optional: If you purchased your diecast on eBay, enter the previous owner's eBay User ID in the appropriate text box.
 - Optional: If you know the email address of the previous owner, enter it in the appropriate text box.

3 Document How You Acquired This Diecast

Date you purchased this item: (mm/dd/yyyy)

Approximate purchase price: (xxxx.xx US Dollars)
This is the amount th

Did you acquire this diecast from a Diecast Registry® member? ▾

Name of previous owner:

eBay® user ID of previous owner:

Email address of previous owner:

20. Uploading pictures is optional. If desired, DCR enables you to upload up to three pictures of your diecast. If you are posting your diecast on the DCR Diecast For Sale page, pictures will make it much more attractive to potential buyers. If you are selling your diecast on eBay, then uploading your pictures here (its free) means that you don't have to pay a fee to add additional pictures to your eBay auction. When you create a car's auction description using the HTML code generated by DCR, it includes a hyperlink that allows visitors to your online auction to see additional pictures of your car uploaded to DCR. To upload a picture, click on the Browse button.

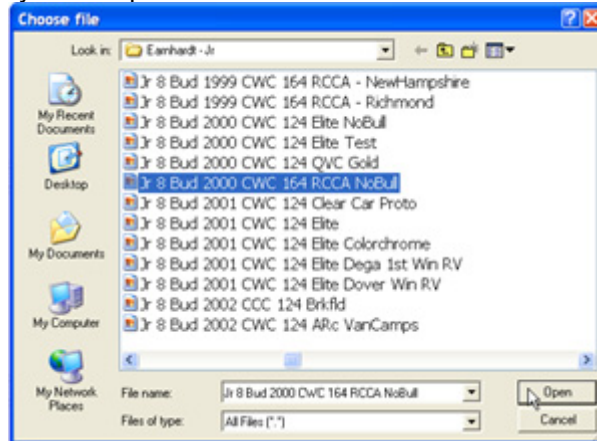
4 Upload Pictures of Your Diecast

Picture 1: (500 KB Max)

Picture 2: (500 KB Max)

Picture 3: (500 KB Max)

21. Select the appropriate file from your computer's hard drive and then click on the Open button.



22. The path to the selected picture will appear in the text box. Repeat steps 20 and 21 above as necessary for the 2nd and 3rd pictures.

4 Upload Pictures of Your Diecast

Picture 1: (500 KB Max)

23. If your diecast is not autographed by the driver (or other person of significance), then proceed to the next step. DCR allows you to permanently record the date and location that your diecast was autographed, and to upload that all-important picture that you took of the driver signing your collectible. Don't have a picture of the driver signing your collectible? Then go ahead and upload a close-up photo of the signature (see the previous steps above) so that it can be seen by prospective buyers and/or fellow collectors. If your diecast is autographed, then select 'Yes' from the

drop down and enter the date and location where the diecast was autographed. If your diecast came from the manufacturer already autographed, then enter the purchase date as the Autograph Date and enter "This diecast came autographed from the manufacturer" as the Location.

5 If Autographed, Document How The Autograph Was Obtained

Autographed:
 Autograph Date: (mm/dd/yyyy)
 Location of Event:

24. Posting your diecast on the Diecast For Sale page is optional. If you want to sell your diecast, select 'Yes' from the List on the For Sale Page drop down. Enter the sales price and the additional flat fee that covers insured shipping to any location in the continental USA.

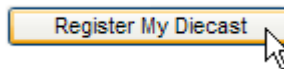
6 Specify Whether Your Diecast Is For Sale

List on the For Sale Page: To enable buyers to purchase your User Information button at the top of the page
 Retail Price: (0000.xx US Dollars)
 Shipping & Insurance Price: (0000.xx US Dollars)

25. Enter any additional comments that you might have regarding this diecast.

7 Enter Additional Comments About This Diecast

26. Click on the Register My Diecast button.



27. You will see an on-screen confirmation of successful registration. This confirmation contains your diecast's unique 9-digit DCR Registration Number. Click on the Print hyperlink to print a copy of this document and save it with your diecast (we recommend putting the registration document in the diecast's box).

28. Click on the My Collection button.



29. This diecast will appear at the top of the table showing all diecast you have registered.

MY COLLECTION

Make: Scale: Year: Sequential #: Autographed?: For Sale?:

Driver: Paint Scheme:

Registration #	Make	Scale	Year	Driver	Paint Scheme	Sequential #	Condition	Autographed?	For Sale	Price	Shipping	
Details 000-003-000	CIVIC Action/ARCCA Club Car	1:64	2000	Earnhardt, Dale Jr	#8 Bud 2000 Chevy Monte Carlo - Richmond No Bull - Total View	0919 / 2520	Mint	No	No			<input type="button" value="Edit"/> <input type="button" value="Delete"/>